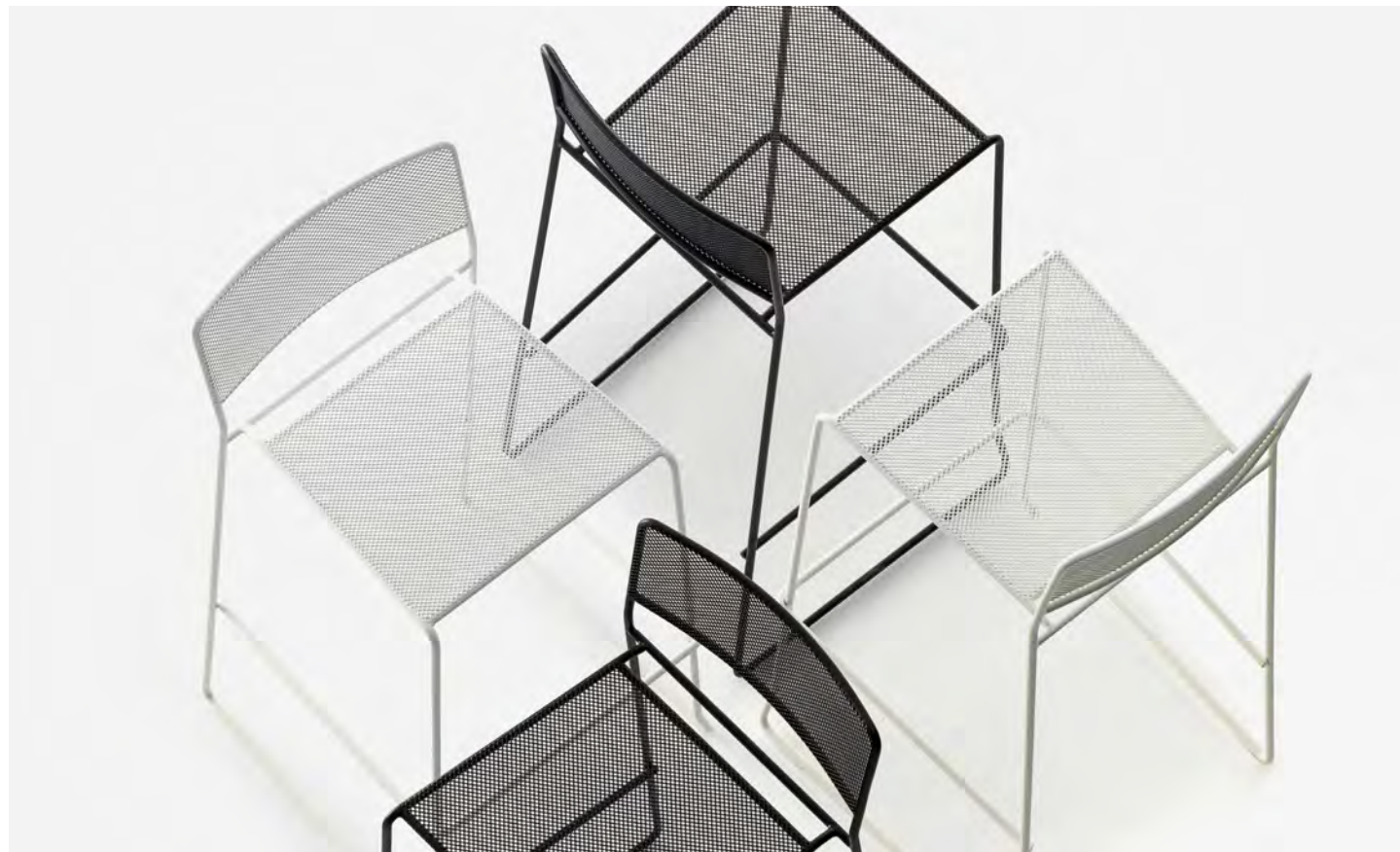


LOG è una collezione di sedie e sgabelli dal design essenziale, dove la struttura in tondino d'acciaio disegna i profili e i volumi con una armoniosa simmetria fra vuoti e pieni.

LOG is an essential design collection of chairs and stools, where the structure in steel rod draws the profiles and the volumes with a harmonious symmetry of empty and full.

log

DESIGN / Manenti & Cannolicchio



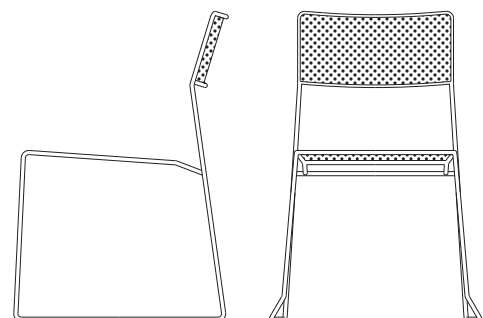


Le versioni con sedile e schienale in rete metallica o intrecciati con corda di pvc sono adatte all'uso in esterno. Il rivestimento in pelle rigenerata offre una elegante soluzione per gli ambienti interni.

Versions with seat and back in mesh or braided with PVC rope are suitable for outdoor use. The bonded leather coating offers a stylish solution for indoors.



DESIGN / Manenti & Cannolicchio

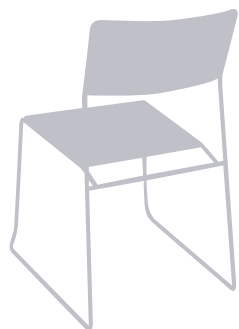


Collezione di sedie e sgabelli con struttura in tondino d'acciaio e diverse finiture per l'interno e l'esterno.

Collection of chairs and stools with steel rod structure and different finishes for the indoor and the outdoor.

log

log / ST



sedia a 4 gambe
four legs chair

sgabello a slitta
sled stool

fusto | frame



M6
BIANCO
WHITE



M7
NERO
BLACK



M8
MARRONE
GRIGIASTRO
GREY BROWN

corda pvc | pvc rope



STR1
TRASPARENTE
TRANSPARENT



STR2
BIANCO
WHITE



STR3
NERO
BLACK



STR4
MARRONE
BROWN



STR5
ROSSO
RED

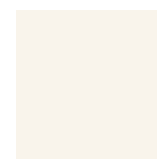


STR6
VERDE
GREEN



STR7
CELESTE
LIGHT BLUE

cuoio | leather



RG1
BIANCO
WHITE



RG2
NERO
BLACK



RG3
GRIGIO
GREY

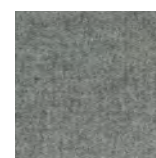


RG4
ROSSO
RED

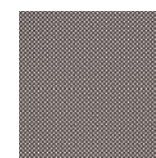
tessuto | fabric**



KVADRAT
DIVINA MD



FRANCO FABBRI
ST. MORRITZ



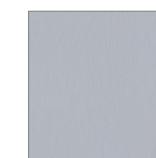
GABRIEL
GO CHECK



FIDIVI
JET



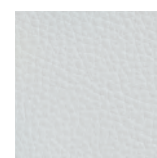
GABRIEL
OBIKA LEATHER



ABITEX
MAGNUM



KVADRAT
STAR 2



ELMO
NORDIC III